



# YGW30N65R

650V /30A Trench Field St

## FEATURES

- 
- - 
  - 
  - 
  - 
  -
- 

## APPLICATION

- 
- 
- 
- 
- 


**Maximum Ratings** (      °C      )

$T$	$T$		
$T$	$T$		
$T$	$T$		
$T$	$T$		
		±	
		±	
$T$	$V_{CE}$		
		$T$	
		$T$	

**Thermal Resistance**


**Electrical Characteristics** (      °C      )

<b>Static</b>						
		$T$ $T$				
	$I$	$V$ $T$ $T$	$V$			
	$I$	$V$	$V \pm$			
	$gfs$	$V$	$I$			

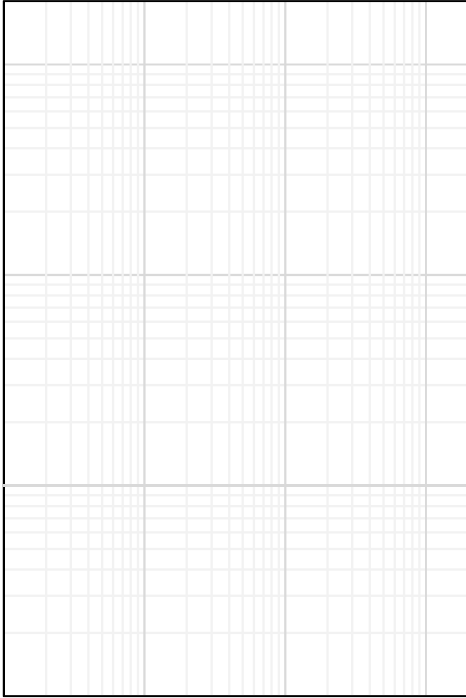
<b>Dynamic</b>						
	$C$					
	$C$	$V$	$V$			
	$C$					
	( )		$\leq$			

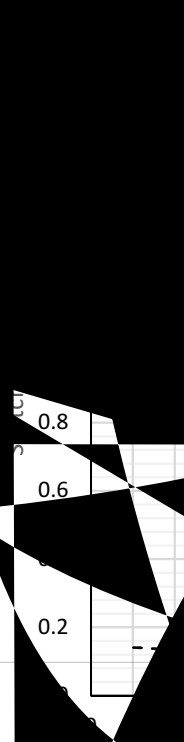
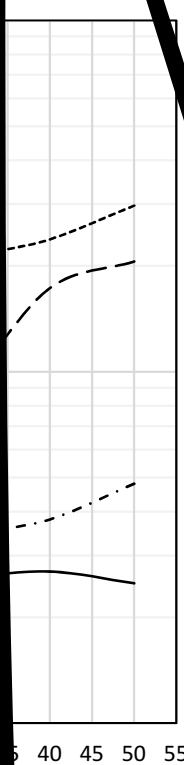
## Switching Characteristic, Inductive Load

<b>Dynamic</b>						
		$V$ $V$ $\Omega$ $I$				

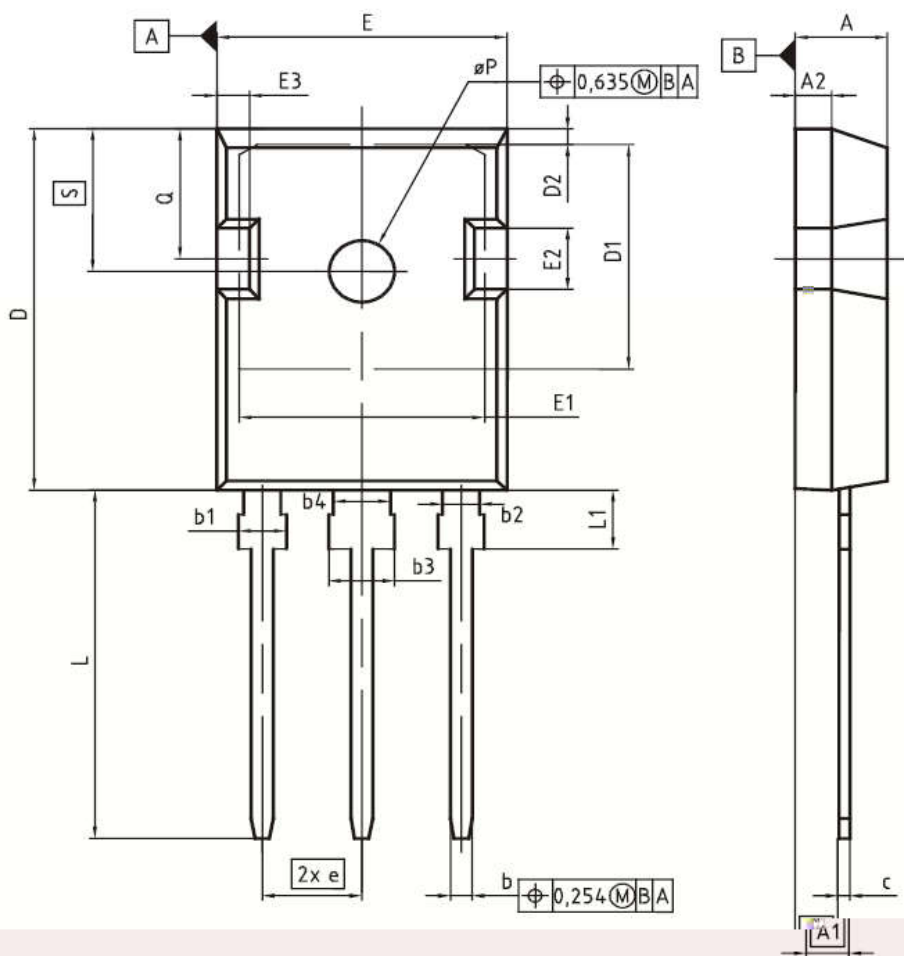
## Electrical Characteristics of the DIODE ( °C )

<b>Dynamic</b>						
	$V_{FM}$					
	$T_{rr}$					
	$I_{rr}$					
	$Q_{rr}$					






## PG-TO247-3



DIM	MILLIMETERS		INCHES	
	MIN	MAX	MIN	MAX
A	4.83	5.21	0.190	0.205
A1	2.27	2.54	0.089	0.100
A2	1.85	2.16	0.073	0.085
b	1.07	1.33	0.042	0.052
b1	1.90	2.41	0.075	0.095
b2	1.90	2.41	0.075	0.095
b3	2.87	3.38	0.113	0.133
b4	2.87	3.13	0.113	0.123
c	0.55	0.68	0.022	0.027
D	20.80	21.10	0.819	0.831
D1	16.25	17.65	0.640	0.695
D2	0.95	1.35	0.037	0.053
E	15.70	16.13	0.618	0.635
E1	13.10	14.15	0.516	0.557
E2	3.68	5.10	0.145	0.201
E3	1.00	2.60	0.039	0.102
e	5.44 (BSC)		0.214 (BSC)	
N	3		3	
L	19.80	20.32	0.780	0.800
L1	4.10	4.47	0.161	0.176
$\phi P$	3.50	3.70	0.138	0.146
Q	5.49	6.00	0.216	0.236
S	6.04	6.30	0.238	0.248